



qathet
REGIONAL DISTRICT



Drinking Water Conservation Plan

February 2022

Cover image: <https://www.neavegroup.com/blog/irrigation/can-an-automatic-sprinkler-system-lower-my-water-bill/>

Plan prepared by MSR Solutions Inc.

Published date: This plan is to come into force and take effect on March 1, 2022

Plan amended on February 23, 2022

#202 - 4675 Marine Avenue, Powell River, BC V8A 2L2

www.gathet.ca

Contents

1.0	<i>Overview of the Drinking Water Conservation Plan</i>	4
2.0	<i>qathet Regional District's Role in Ensuring the Sustainable Use of Water Resources</i>	5
2.1	Managing the Region's Drinking Water Responsibly	5
2.2	Water Conservation in the qathet Regional District	6
3.0	<i>Drinking Water Conservation Plan – Stages 1 Through 4</i>	7
3.1	Stage 1 Water Restrictions	8
3.2	Stage 2 Water Restrictions	9
3.3	Stage 3 Water Restrictions	11
3.4	Stage 4 Water Restrictions	13
3.5	Stage Activation	15
3.6	Public Notification	15
3.7	Monitoring and Enforcement	15
3.8	Updating the Drinking Water Conservation Plan	15
4.0	<i>Exemptions for Member Jurisdictions for Health and Safety Reasons</i>	16
5.0	<i>qRD Member Jurisdictions</i>	17
6.0	<i>Glossary and Terms</i>	18



1.0 Overview of the Drinking Water Conservation Plan

The qathet Regional District (qRD), formerly known as the Powell River Regional District, was created and constituted in 1965 in response to the demands and governing of services outside the boundaries of existing municipalities, now labelled as electoral areas. The qRD is governed by a Board of Directors (the Board) consisting of representatives from the five electoral areas and the city of Powell River. The members of the Board also form the Committee of the Whole, having an appointed Chair (the Chair) to oversee the district service operations. The district service operations are grouped into sub-committees and commissions with appointed chairs that report and provide recommendation to the Board.

Under the qRD, clean and safe drinking water is delivered to a small group, an estimated 519 people, whereas the region's population is nearly 21,000. The Regional District's Drinking Water Conservation Plan (DWCP) however, is a region-wide policy developed with member jurisdictions and other stakeholders to manage the use of drinking water during periods of high demand, mostly during late spring to early fall, and during periods of water shortages and emergencies. The DWCP helps ensure the collective needs for drinking water are met affordably and sustainably now, and in the future.

The water restrictions, as outlined in the DWCP, provide regional direction to ensure the sustainable use of water resources.

The DWCP applies only to member jurisdictions of the qRD and the use of drinking water from the qRD's water system. Jurisdictions that are not members of the qRD are encouraged to follow the restrictions in the plan to help conserve drinking water and demonstrate leadership and consistency to water users across the region. The DWCP restrictions do not apply to the use of rainwater, grey water, any forms of recycled water, or water from sources outside the qRD water system. If water is supplied from an alternative source other than jurisdictional water systems, such users are encouraged to display signs indicating the alternative water source.

Underlying the development and implementation of the DWCP are the following four principles:

1. Recognize drinking water as a precious resource that must be conserved.
2. Maintain the environmental, economic vitality and health and safety of the region to the extent possible in the face of a water shortage.
3. Optimize available water supplies and reduce water use.
4. Minimize adverse impacts to public activity and quality of life for the region's residents.



2.0 qathet Regional District's Role in Ensuring the Sustainable Use of Water Resources

2.1 Managing the Region's Drinking Water Responsibly

The qathet Regional District owns and operates one residential water system, the Myrtle Pond water system. It is located approximately two kilometers south of Powell River and is sourced by raw well water supplied by three wells. The facility and the wells can deliver a demand of 496 m³/day, and its infrastructure has received equipment replacements, a new water reservoir, and a new treatment facility in recent years. This treatment system is equipped with sand filtration and chlorination, therefore providing secondary disinfection.

The qRD is not involved with or has any influence over other systems. Member jurisdictions deliver drinking water from their own systems, through their infrastructure, to individual properties. The qRD delivers water to users on a cost recovery basis.

All individual billing and enforcement of water use restrictions is undertaken by each respective member jurisdiction.

The Myrtle Pond water system is managed in accordance with Provincial regulations and Federal guidelines. In addition to meeting those regulations and guidelines, the qathet Regional District is responsible for developing long-range plans for managing the region's drinking water and operating the water system. The system is operated in alignment with priorities identified in the qathet Regional District's Board Strategic Plan, under the region's Drinking Water Management Plan and in consideration of the principles of sustainability through decision making that considers social, economic, and environmental values. A water conservation strategy can result in benefits to the

community and the district, including a reduction in energy requirements and emissions, costs, and environmental protection.

Energy is consumed by pumps that are required to distribute water, the water treatment process, and then the conveyance of wastewater to the treatment plant. Accompanying a reduction in the energy use through water conservation, emissions and the costs to residents and businesses will follow. Another environmental advantage is the conservation of natural water supplies. Similar benefits are observed with the associated reduction in wastewater.

It is the responsibility of the users to monitor and help keep their portion of the water system in good working order. Extending the useful life, providing adequate water to all users, and delaying the need for costly replacements are all community goals. Users are therefore also responsible for the detection and reporting of leaks or issues in their water system and should seek repairs at the earliest opportunity. A condition of service in the Myrtle Pond Bylaw is that each owner is responsible for all pipes and fixtures between the property line and the owners' premises, in terms of construction, repair, and maintenance.

As a user, a test that can help expose a leak would be to take a water meter reading at night before going to bed, and again first thing in the morning. The meter readings should be identical if no water was used overnight. If they're not the same, you may have a leak.



2.2 Water Conservation in the qathet Regional District

Water conservation is a major component of the qathet Regional District's planning to ensure the sustainable use of water resources. Helping water users such as residents, businesses, schools, and member jurisdictions to use only what they need helps ensure an efficient and relatively cost-effective water system. Most precipitation in the Regional District occurs between November and April. Dry summer months lead to an increase in water use, particularly for the outdoor uses described in the DWCP. Assisting water users to develop sustainable water use habits year-round makes a significant difference in reducing daily demand and sustaining reservoir levels during dry months. Reducing demand through water conservation practices also defers the need to invest in expanding the infrastructure, even as the region's population grows by several hundred residents annually. The DWCP describes the staged restrictions related to outdoor water use that water users should follow to:

- Prevent water from being wasted
- Prepare for and respond to drought and emergency conditions
- Ensure drinking water can be delivered to all users during the summer when rainfall levels are lowest and the demand for water is highest
- Adapt to a changing climate
- Support fish habitat and ecosystems
- Minimize the costly expansion of the water system infrastructure
- Maintain adequate water pressure to keep the system operating safely and effectively

More information on the qathet Regional District water conservation initiatives, improvements and expansion to the delivery system, and planning for future water supply can be found at www.qathet.ca.



1. <https://www.qathet.ca/2019/09/19/qathet-regional-district-receives-level-2-recognition-for-climate-change-actions/>



3.0 Drinking Water Conservation Plan – Stages 1 Through 4

Each stage of the DWCP is designed to reduce demand for drinking water through specific water restrictions which become more restrictive with higher stages. The following general restrictions apply to all stages of the plan in addition to the specific water restrictions contained in each stage:

- All hoses must have an automatic shut-off device
- Water must not unnecessarily run off on impermeable surfaces such as driveways, curbs, pathways, or gutters when watering lawns and plants
- Artificial playing turf and outdoor tracks must not be watered except for a health or safety reason
- Hoses and taps must not run unnecessarily
- Irrigation systems must not be faulty, leaking, or misdirected

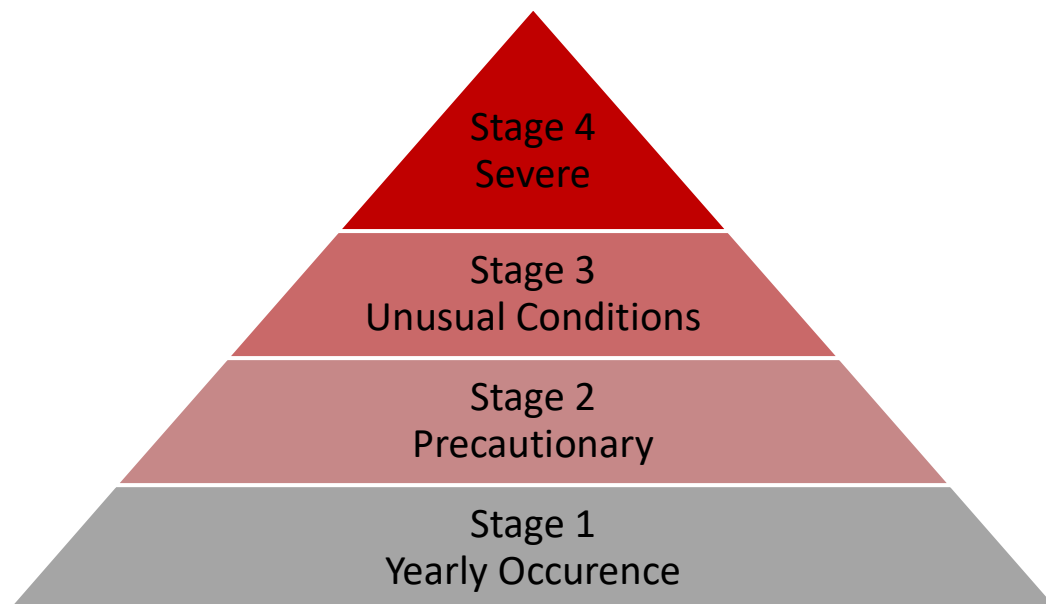
In most cases, the stages of the plan will be activated in successive order, but they can also be activated immediately in any order.

Stage 1 reduces the demand in summer months and is automatically in effect on July 1st until September 15th, with the possibility that the qRD may implement this plan at their discretion.

Stages 2 and 3, activated and deactivated by the Manager of Operational Services, are likely to be activated during unusually hot and dry conditions to maximize conservation.

Stage 4 is also activated and deactivated by the Manager of Operational Services, during an emergency, to immediately limit water use to essential needs only.

The decision to activate more restrictive stages of the DWCP is based on measured facts, reasoned predictions, and historical patterns, with a goal of ensuring the sufficient supply of water until the concerns that caused the more restrictive stages are over, typically in the early fall with the return of seasonal rainfall.





3.1 Stage 1 Water Restrictions

Stage 1 comes into effect automatically each year on July 1st until September 15th or as directed by the qRD, to prevent drinking water wastage and ensure water users employ efficient and effective watering practices.

User	Water Use	Restriction
Residential	Watering lawns	Even-numbered civic addresses on even days: <ul style="list-style-type: none"> - Automatic watering from 5 am to 7 am - Manual watering from 6 am to 9 am Odd-numbered civic addresses on odd days: <ul style="list-style-type: none"> - Automatic watering from 5 am to 7 am - Manual watering from 6 am to 9 am
	Watering new lawns or lawns being treated for the European Chafer Beetle	Outside restricted lawn watering times with written permission from a member jurisdiction
	Watering trees, shrubs, and flowers excluding edible plants	On any day from 5 am to 9 am if using a sprinkler On any day at any time if using a handheld hose, soaker hose, water container, or drip irrigation
Non-Residential	Watering lawns (mixed-use buildings e.g., residential, and commercial should follow Non-residential watering times)	Even-numbered civic addresses on Mondays: <ul style="list-style-type: none"> - Automatic watering from 4 am to 6 am - Manual watering from 6 am to 9 am Odd-numbered civic addresses on Tuesdays: <ul style="list-style-type: none"> - Automatic watering from 4 am to 6 am - Manual watering – from 6 am to 9 am
	Watering new lawns or lawns being treated for European Chafer Beetle	Outside restricted lawn watering times with written permission from a member jurisdiction
	Watering trees, shrubs, and flowers excluding edible plants	On any day from 4 am to 9 am if using a sprinkler On any day at any time if using a handheld hose, soaker hose, water container, or drip irrigation
Governments/Schools/Parks	Watering lawns and grass boulevards	Even-numbered civic addresses on Mondays: <ul style="list-style-type: none"> - Automatic watering from 4 am to 6 am - Manual watering from 6 am to 9 am Odd-numbered civic addresses on Tuesdays: <ul style="list-style-type: none"> - Automatic watering from 4 am to 6 am - Manual watering from 6 am to 9 am
	Watering new lawns or lawns being treated for the European Chafer Beetle	Outside restricted lawn watering times with written permission from a member jurisdiction
	Watering trees, shrubs, and flowers excluding edible plants	On any day from 4 am to 9 am if using a sprinkler On any day at any time if using a handheld hose, soaker hose, water container, or drip irrigation
	Watering soil-based playing fields	On any day from 7 pm to 9 am, except if: <ul style="list-style-type: none"> - Watering newly over-seeded fields if in compliance with the written permission from a member jurisdiction - Operating under an approved member jurisdiction water management plan
	Watering sand-based playing fields	On any day from 7 pm to 9 am, except if: <ul style="list-style-type: none"> - Watering newly over-seeded fields if in compliance with the written permission from a member jurisdiction - Operating under an approved member jurisdiction water management plan
	Flushing water mains	Prohibited, unless required for water quality or by direction of the Health Authority



3.2 Stage 2 Water Restrictions

Stage 2 restrictions conserve drinking water to ensure the existing supply will last until the return of seasonal rainfall or until the water shortage situation is over. These restrictions are designed to conserve enough drinking water to avoid or delay moving to Stage 3 as long as possible.

User	Water Use	Restriction
Residential	Watering lawns	Even-numbered civic addresses on Saturdays: <ul style="list-style-type: none"> - Automatic watering from 5 am to 7 am - Manual watering from 6 am to 9 am Odd-numbered civic addresses on Sundays: <ul style="list-style-type: none"> - Automatic watering from 5 am to 7 am - Manual watering from 6 am to 9 am
	Watering new lawns or lawns being treated for the European Chafer Beetle	Under written permission only, Stage 1 written permission remains in effect until the end of term or permission is withdrawn
	Watering trees, shrubs, and flowers excluding edible plants	On any day from 5 am to 9 am if using a sprinkler On any day at any time if using a handheld hose, soaker hose, water container, or drip irrigation
	Washing impermeable surfaces	Prohibited except if: <ul style="list-style-type: none"> - For a health or safety reason - Preparing a surface for painting or similar treatment - Aesthetic cleaning by a commercial cleaning operation
	Topping up or filling aesthetic water features	Prohibited
Non-Residential	Watering lawns (mixed-use buildings e.g., residential, and commercial should follow Non-residential watering times)	Prohibited
	Watering new lawns or lawns being treated for the European Chafer Beetle	Under written permission only, Stage 1 written permission remains in effect until the end of term or permission is withdrawn
	Watering trees, shrubs, and flowers excluding edible plants	On any day from 4 am to 9 am if using a sprinkler On any day at any time if using a handheld hose, soaker hose, water container, or drip irrigation
	Watering golf courses	Fairways watering anytime on any one day in a 7-day period, except if operating under an approved member jurisdiction water management plan
	Washing impermeable surfaces	Prohibited except if: <ul style="list-style-type: none"> - For a health or safety reason - Preparing a surface for painting or similar treatment - Aesthetic cleaning by a commercial cleaning operation
	Topping up or filling aesthetic water features	Prohibited



"Genetically Engineered Free Crop Area"

User	Water Use	Restriction
Governments/Schools/Parks	Watering lawns and grass boulevards	Prohibited
	Watering new lawns or lawns being treated for the European Chafer Beetle	Under written permission only, Stage 1 written permission remains in effect until the end of term or permission is withdrawn
	Watering trees, shrubs, and flowers excluding edible plants	On any day from 4 am to 9 am if using a sprinkler On any day at any time if using a handheld hose, soaker hose, water container, or drip irrigation
	Watering soil-based playing fields	No more than 4 days in a 7-day period from 7 pm to 9 am, except if: <ul style="list-style-type: none">- Watering newly over-seeded fields if in compliance with the written permission from a member jurisdiction- Operating under an approved member jurisdiction water management plan
	Watering sand-based playing fields	On any day from 7 pm to 9 am, except if: <ul style="list-style-type: none">- Watering newly over-seeded fields if in compliance with the written permission from a member jurisdiction- Operating under an approved member jurisdiction water management plan
	Flushing water mains	Prohibited
	Operating water play parks and pools	Prohibited except water play parks with user activated switches
	Topping up or filling aesthetic water features	Prohibited



3.3 Stage 3 Water Restrictions

Stage 3 restrictions respond to serious drought conditions, or other water shortage, and achieve further reductions in drinking water use by implementing a lawn watering ban and additional stricter measures.

User	Water Use	Restriction
Residential	Watering lawns	Prohibited
	Watering new lawns or lawns being treated for the European Chafer Beetle	Prohibited, prior written permission is invalidated
	Watering trees, shrubs, and flowers excluding edible plants	Prohibited if using a sprinkler or soaker hose On any day at any time if using a handheld hose, water container, or drip irrigation
	Washing impermeable surfaces	Prohibited except if: <ul style="list-style-type: none"> - For a health or safety reason - Preparing a surface for painting or similar treatment by a commercial cleaning operation
	Topping up or filling aesthetic water features	Prohibited
	Topping up or filling pools and hot tubs	Prohibited
	Washing vehicles and boats	Prohibited except to clean windows, lights, mirrors, licence plates, and boat engines for safety
Non-Residential	Watering lawns (mixed-use buildings e.g., residential, and commercial should follow Non-residential watering times)	Prohibited
	Watering new lawns or lawns being treated for the European Chafer Beetle	Prohibited, prior written permission is invalidated
	Watering trees, shrubs, and flowers excluding edible plants	Prohibited if using a sprinkler or soaker hose On any day at any time if using a handheld hose, water container, or drip irrigation
	Watering golf courses	Fairway watering prohibited except if operating under an approved member jurisdiction water management plan
	Washing impermeable surfaces	Prohibited except if: <ul style="list-style-type: none"> - For a health or safety reason - Preparing a surface for painting or similar treatment by a commercial cleaning operation
	Topping up or filling aesthetic water features	Prohibited
	Topping up or filling pools and hot tubs	Prohibited except for pools and hot tubs with a permit to operate in accordance with health authorities having jurisdiction over pool and hot tub regulation
	Washing vehicles and boats	Prohibited except to clean windows, lights, mirrors, licence plates, and boat engines for safety
	Commercial vehicle washing	Prohibited except if: <ul style="list-style-type: none"> - A facility that installed an automatic vehicle wash system before November 1, 2017, is operating on a basic wash and rinse cycle only - A facility that installed an automatic vehicle wash system after November 1, 2017, is operating using a water recycling system that achieves a minimum 60% water recovery rate over the full wash cycle - A hand wash and self-service facility, is operating using high-pressure wands or brushes that achieve a maximum flow rate of 11.4 litres per minute



User	Water Use	Restriction
Governments/Schools/Parks	Watering lawns and grass boulevards	Prohibited
	Watering new lawns or lawns being treated for the European Chafer Beetle	Prohibited, prior written permission is invalidated
	Watering trees, shrubs, and flowers	Prohibited if using a sprinkler or soaker hose On any day at any time if using a handheld hose, water container, or drip irrigation
	Watering soil-based playing fields	No more than 3 days in a 7-day period from 7 pm to 9 am except if: <ul style="list-style-type: none"> - Watering newly over-seeded fields if in compliance with the written permission from a member jurisdiction - Operating under an approved member jurisdiction water management plan
	Watering sand-based playing fields	No more than 5 days in a 7-day period from 7 pm to 9 am, except if: <ul style="list-style-type: none"> - Watering newly over-seeded fields if in compliance with the written permission from a member jurisdiction - Operating under an approved member jurisdiction water management plan
	Flushing water mains	Prohibited
	Operating water play parks	Prohibited except water play parks with user activated switches
	Topping up or filling aesthetic water features	Prohibited
	Topping up or filling pools and hot tubs	Prohibited except for pools and hot tubs with a permit to operate in accordance with health authorities having jurisdiction over pool and hot tub regulation
	Washing vehicles and boats	Prohibited except to clean windows, lights, mirrors, licence plates, and boat engines for safety



3.4 Stage 4 Water Restrictions

Stage 4 is an emergency stage that limits both indoor and outdoor water uses as much as possible to ensure an adequate supply of drinking water for human consumption, use in firefighting, and to protect the quality of drinking water within the water system for public health.

Stage 4 is activated based on the rare occurrence of a significant emergency, such as an earthquake, flood, wild land and interface fire, severe weather, or a prolonged regional power outage that causes significant impacts to the water system infrastructure (e.g., damage to major water transmission lines, pump stations, or treatment plants).

In addition to the following outdoor water restrictions, the Regional District could request that industrial water users implement voluntary reductions or reschedule production processes that consume large amounts of water until Stage 4 is deactivated.

User	Water Use	Restriction
Residential	Watering lawns	Prohibited
	Watering new lawns or lawns being treated for the European Chafer Beetle	Prohibited, prior written permission is invalidated
	Watering trees, shrubs, flowers, and edible plants	Prohibited
	Topping up or filling aesthetic water features	Prohibited
	Topping up or filling pools and hot tubs	Prohibited
	Washing impermeable surfaces	Prohibited except if ordered by a regulatory authority having jurisdiction for a health or safety reason
	Washing vehicles and boats	Prohibited except to clean windows, lights, mirrors, licence plates, and boat engines for safety
Non-Residential	Watering lawns (mixed-use buildings e.g., residential, and commercial should follow Non-residential watering times)	Prohibited
	Watering new lawns or lawns being treated for the European Chafer Beetle	Prohibited, prior written permission is invalidated
	Watering trees, shrubs, flowers, and edible plants	Prohibited
	Watering golf courses	Prohibited
	Washing impermeable surfaces	Prohibited except if ordered by a regulatory authority having jurisdiction for health or safety reason
	Topping up or filling aesthetic water features	Prohibited
	Topping up or filling pools and hot tubs	Prohibited
	Washing vehicles and boats	Prohibited except to clean windows, lights, mirrors, licence plates, and boat engines for safety
	Commercial vehicle washing	Prohibited



"Genetically Engineered Free Crop Area"

User	Water Use	Restriction
Governments/Schools/Parks	Watering lawns and grass boulevards	Prohibited
	Watering new lawns or lawns being treated for European Chafer Beetle	Prohibited, prior written permission is invalidated
	Watering trees, shrubs, flowers, and edible plants	Prohibited
	Watering soil-based playing fields	Prohibited
	Watering sand-based playing fields	Prohibited
	Flushing water mains	Prohibited
	Operating water play parks	Prohibited
	Topping up or filling aesthetic water features	Prohibited
	Topping up or filling pools and hot tubs	Prohibited
	Washing vehicles and boats	Prohibited except to clean windows, lights, mirrors, licence plates, and boat engines for safety



2. <https://businessviewmagazine.com/qathet-regional-district-bc-working-together/>



3.5 Stage Activation

Stage 1 comes into effect automatically each year on July 1st until September 15th or as directed by the qRD. Stages 2, 3 and 4 are activated and deactivated by the qRD Manager of Operational Services.

The following factors guide the Manager's decision in activating or deactivating the stages of the DWCP:

- Hydrologic forecasting parameters including temperature, rainfall, snowpack, and snowmelt
- Seasonal water demand trends (measured and charted daily)
- User compliance with the restrictions
- Water transmission system performance and ability to deliver water during periods of high demand

Once the Manager makes the decision to activate or deactivate a stage, all member jurisdictions are alerted within 24 hours, which triggers public notification and enforcement. The Manager has the authority to activate, extend or deactivate stages at any time.

3.6 Public Notification

The qathet Regional District and member jurisdictions are responsible for communicating information to water users about the restrictions in clear and plain language including:

- Providing public access to the restrictions in both a full and abbreviated version
- Distributing communications materials
- Promoting the annual start date of the restrictions
- Notification of activation or deactivation of stages
- Responding to queries
- Recording feedback for consideration in future reviews

3.7 Monitoring and Enforcement

Member jurisdictions incorporate the DWCP restrictions into their bylaws, where each member jurisdiction is responsible for monitoring and enforcing the restrictions in their communities. Member jurisdictions will ensure that their respective enforcement and penalties for violations of the water restrictions increase with each successive stage of the DWCP to reflect the severity of the situation requiring the activation of an advanced stage.

Member jurisdictions may use a variety of tools to promote and ensure bylaw compliance including educational materials, using verbal and written warnings, issuing tickets and imposing fines.

The Myrtle Pond Specified Area Water System falls under the Powell River Regional District Bylaw No. 117. Bylaw No. 117 contains prohibitions, conditions of service, and consumption regulations relating to the monitoring and enforcement of water conservation. Section 6 states that the Regional District may, at its discretion and requirements of the public interest, suspend or limit the consumption of water from the Myrtle Pond Specified Area. This includes the ability to regulate the hours and the manner in which water may be used.

3.8 Updating the Drinking Water Conservation Plan

The DWCP is reviewed periodically to reflect population growth, climate change, new technologies and changes in water system infrastructure. Proposed changes are discussed with member jurisdictions responsible for plan implementation and enforcement, and with stakeholders. All updates are reviewed and approved by the Board.



4.0 Exemptions for Member Jurisdictions for Health and Safety Reasons

The qathet Regional District encourages all member jurisdictions to follow the watering restrictions in the DWCP to conserve water and demonstrate leadership. However, the qathet Regional District recognizes that member jurisdictions have important decisions to make regarding protecting public health and safety, and that certain circumstances may require the use of drinking water in a manner that is not consistent with the DWCP restrictions. Therefore, member jurisdictions have the authority to use water during any stage and are exempt from the restrictions in the DWCP for activities that are necessary for the purpose of protecting public health and safety. Examples include:

- Flushing water mains where a significant health or safety concern is identified
- Washing down public spaces where significant health concerns are raised, or on the recommendation of the local health authority
- Wetting forest and park perimeters or boulevards as part of a fire prevention strategy during extreme hot and dry weather, or on the recommendation of the local fire authority
- Protecting publicly funded infrastructure such as community playing fields or swimming facilities, on the recommendation of the city manager of the qRD member having jurisdiction.
- Deploying misting stations in periods of extreme heat to protect human health and safety



3. <https://businessviewmagazine.com/qathet-regional-district-bc-working-together/>

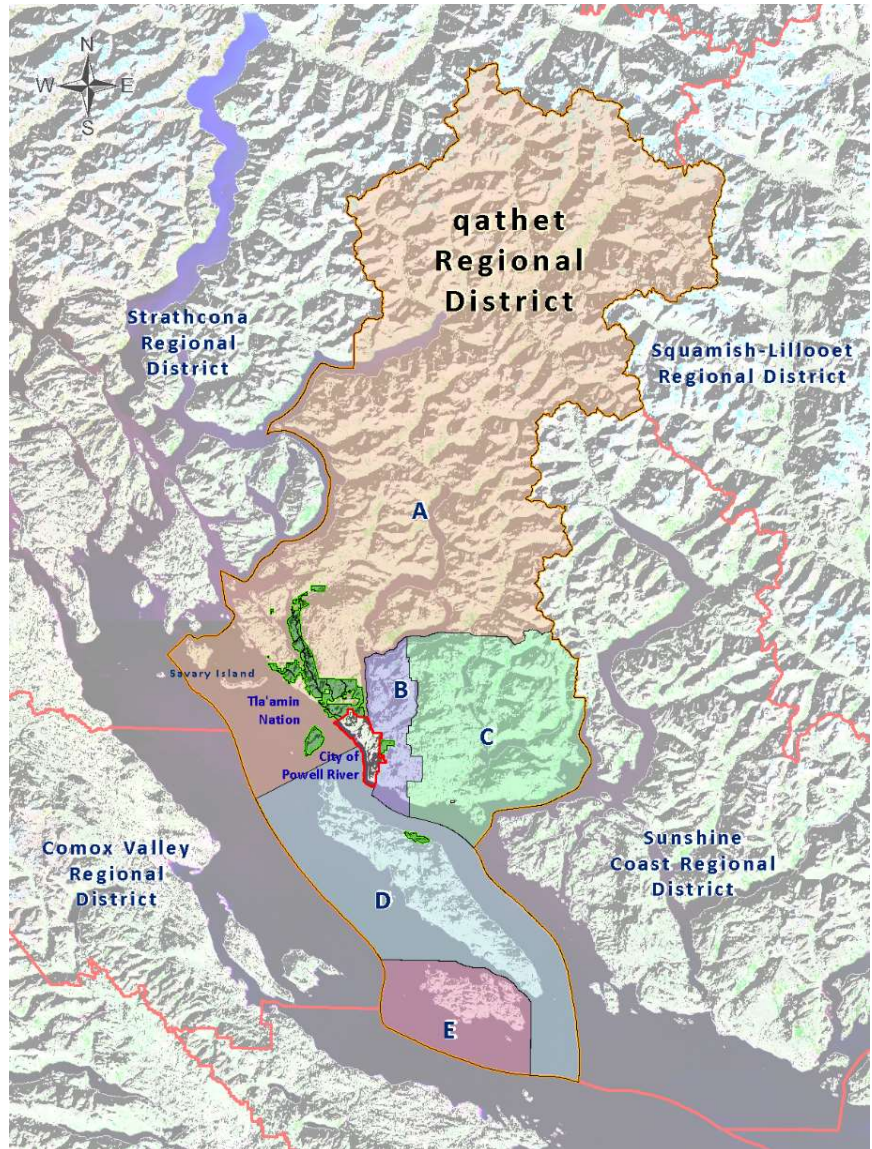


5.0 qRD Member Jurisdictions

The following jurisdictions are the members of the qRD:

- Electoral Area A
- Electoral Area B
- Electoral Area C
- Electoral Area D
- Electoral Area E
- City of Powell River
- Territory of the Tla'amin
- Territory of the Shíshálh
- Territory of the Klahoose
- Territory of the K'ómoks

The Director representing Electoral Area D in the qathet Regional District is the appointed Chair of the Committee of the Whole, with the remaining directors as members.



4. <https://www.qathet.ca/about/about-the-qrd/geographic-boundaries/>



6.0 Glossary and Terms

Aesthetic cleaning – means the use of water for cleaning when it is not for a health or safety reason.

Aesthetic water feature – means a fountain, pond, or other water feature that primarily serves an aesthetic purpose. It does not include ponds that contain fish.

Automatic watering – means applying water using an automated water delivery system that requires only minimal human intervention or supervision and typically employs mechanical, electronic, or other components and devices, including but not limited to timers, sensors, computers, or mechanical appliances.

Automatic shut-off device – means a device attached to a water hose that shuts off the supply of water automatically unless hand pressure is applied to operate the device.

Automatic vehicle wash system – includes:

- **Conveyor vehicle wash:** a commercial vehicle washing facility where the customer's vehicle moves through an enclosed conveyance mechanism during the wash.
- **In-bay vehicle wash:** a commercial vehicle washing facility where the customer parks the vehicle inside a bay, and the vehicle remains stationary while a spray mechanism moves over the vehicle to clean it.

Basic wash and rinse cycle – means a process sequence in an automatic vehicle wash system that consists of a single wash stage followed by a single rinse stage and no additional processes or optional stages; typically, this is the minimum level of service that a customer can select, where total water usage is less than 200 litres per vehicle.

Board – means the Board of Directors of the qRD.

Commercial cleaning operation – means a company, partnership, or person that offers commercial cleaning services, including pressure washing, window cleaning, and other similar building cleaning services, to the public for a fee.

Commercial vehicle washing – means commercial vehicle washing services offered to the public for a fee, but excludes car dealerships, fleet vehicle washing facilities, and charity car washes.

Drip Irrigation – means an irrigation system that delivers water directly to the root zone of the plant at a low flow rate through individual emission points (emitters) using droplets of water and excludes sprinkler irrigation systems, micro-spray systems, misting systems, and soaker hoses.

Edible plant – means a plant grown for the purpose of human consumption.

European Chafer Beetle – means an invasive insect pest whose larvae feed on the roots of grasses, causing serious damage to lawns. The Chafer Beetle larvae can be treated naturally using nematodes, which typically requires a moist lawn for a period of 2 to 3 weeks from the day of application.

Flushing water main – discharging water from a water main for routine maintenance such as water quality management and measurement of firefighting flow capacity.

Golf course – means the greens, tee areas, and fairways that are designed and maintained as playing surfaces for golf but does not include rough areas or lawns that are not maintained as playing surfaces.

Governments/Schools/Parks – includes property zoned for member jurisdiction, provincial, or federal uses including road rights of way, and school, college, and university uses.

Hand wash and self-service facility – a commercial vehicle washing facility where the facility's staff wash the customer's vehicle, or the customer washes their own vehicles with spray wands and brushes.

Health and safety reason – means a precaution necessary to protect health and safety, including the removal of contaminants, bodily fluids, slip and fall hazards, controlling pests, and suppressing and controlling dust.

Impermeable surface – means a material added to the surface of the ground, or on the exterior of a building or structure that is impermeable to water, including but not limited to glass, wood, concrete, asphalt, paving stones, and other similar materials.



Lawn – means a cultivated area surrounding or adjacent to a building that is covered by grass, turf, or a ground cover plant such as clover, including areas such as boulevards, parks, school yards and cemeteries, but excluding golf courses, soil-based playing fields, and sand-based playing fields.

Manual watering – means applying water using a device or tool that is manually held or operated by a human being, without automatic watering.

Member jurisdiction – means member jurisdiction of the qRD.

New lawn – means a lawn that is newly established either by seeding or the laying of new sod or turf.

Non-residential – includes properties zoned for a permitted use other than a residential use, including commercial, industrial, and institutional uses, and including a property zoned for mixed residential and non-residential uses, but excluding governments/schools/parks.

Non-residential pool and hot tub – means a pool or hot tub permitted to be operated in accordance with health authorities having jurisdiction over pool and hot tub regulation, including pools and hot tubs operated by government agencies, hotels, multifamily strata corporations, and private clubs.

Odd-numbered civic address or Even-numbered civic address – means the numerical portion of the street address of a property, and in the case of multi-unit commercial or residential complex such as townhouses, condominiums, or other strata-titled properties, means the numerical portion of the street address that is assigned to the entire complex, and not the individual unit number.

Over-seeded – means the application of grass seed on existing turf, typically in early fall or spring and may also include associated processes such as aeration, weeding, dethatching and fertilization, for the purpose of mitigating against grass thinning.

qRD – means the qathet Regional District.

qRD Chair – the person that the Administration Board of the qRD appoints as its Chair.

Residential – means a property zoned for single family or multi-family residential use.

Residential pool and hot tub – means a residential pool or hot tub installed for the use of the occupants and guests of one single family dwelling or duplex and does not require a permit in accordance with health authorities having jurisdiction over pool and hot tub regulation.

Sand-based playing field – means a playing field that is constructed with a highly permeable sand-based root zone typically 30 to 40 centimetres deep over a drainage system with drainpipes bedded in gravel and is designed and maintained to be playable year-round.

Soaker hose – means a garden hose or pipe with small holes that allow water to seep into the ground, to the roots of plants, discharging water through the entire length of its porous surface.

Soil-based playing field – means a playing field that is covered with grass, sod or turf that is designed and maintained to be played upon, or that is used for sporting or other community events and activities, but does not include lawns, golf courses, or sand-based playing fields.

Vehicle – a device in, on or by which a person or item is or may be transported or drawn on a highway or other roadway.

Water management plan – a plan proposed by the owner or operator of a golf course, soil-based playing field, and sand-based playing field operators and approved by the qRD member having jurisdiction. The plan sets out terms such as water use targets during the different stages of the DWCP, restrictions to reduce water use, and reporting requirements for the owner or operator.

Water play park – a recreational facility that is primarily outdoors, including spray pools and wading pools, spray parks, splash pads, and water slides.

Watering lawn – means applying water to a lawn with any device or tool including but not limited to a sprinkler, hose, mister, or drip irrigation.



qathet
REGIONAL DISTRICT