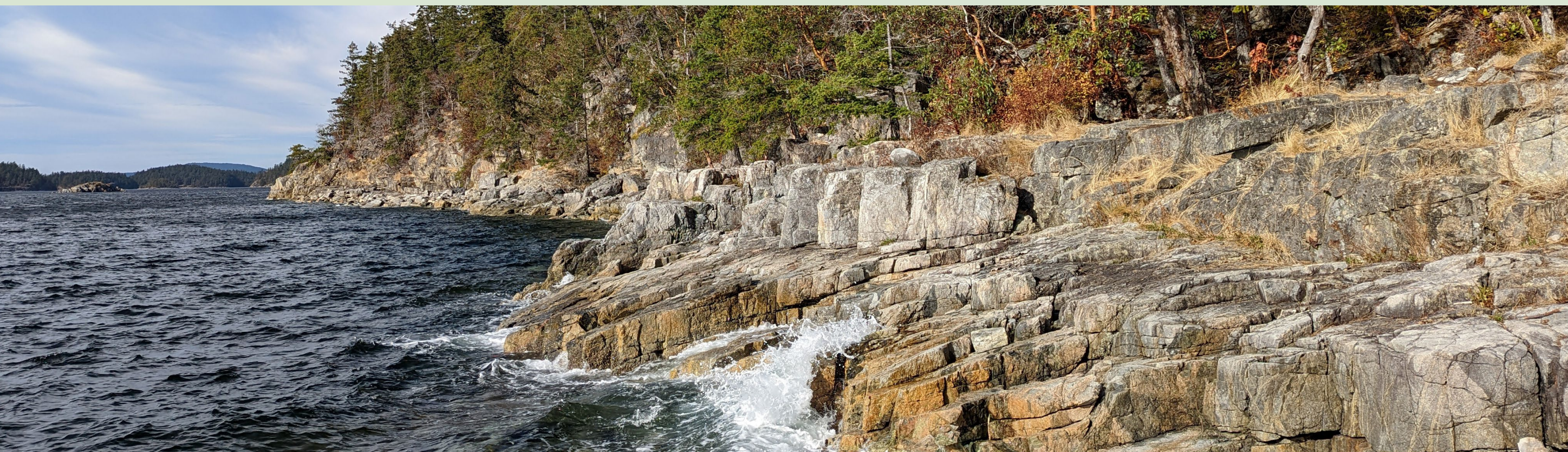


Parks & Trails Strategy

Project Overview

The qathet Regional District is developing a Parks and Trails Strategy to guide the future direction for parks and trails owned and operated by the qRD.

We invite you to share your ideas!



Diver's Rock Regional Park

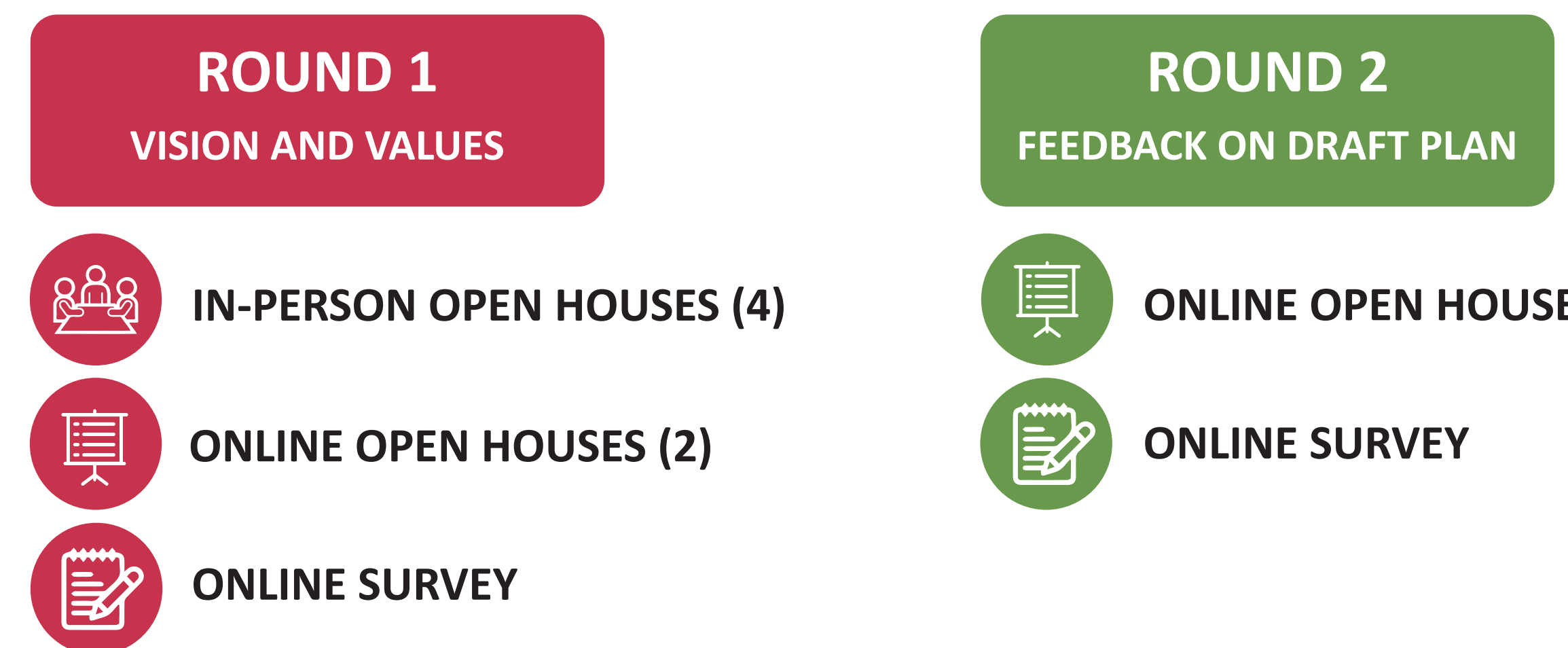
The Parks & Trails Strategy will:

- Present a comprehensive inventory of current parks and trails
- Identify community values and priorities
- Identify key issues, challenges and opportunities
- Establish goals and highlight actions that reflect the community's desires and aspirations for our parks and trails
- Identify priorities, guide decision-making and operations, and allocate resources over the next ten years
- Include a policy for parkland acquisition

PROJECT TIMELINE



OPPORTUNITIES TO PARTICIPATE



To learn more about the project or to view our full schedule of events, please visit the project website:

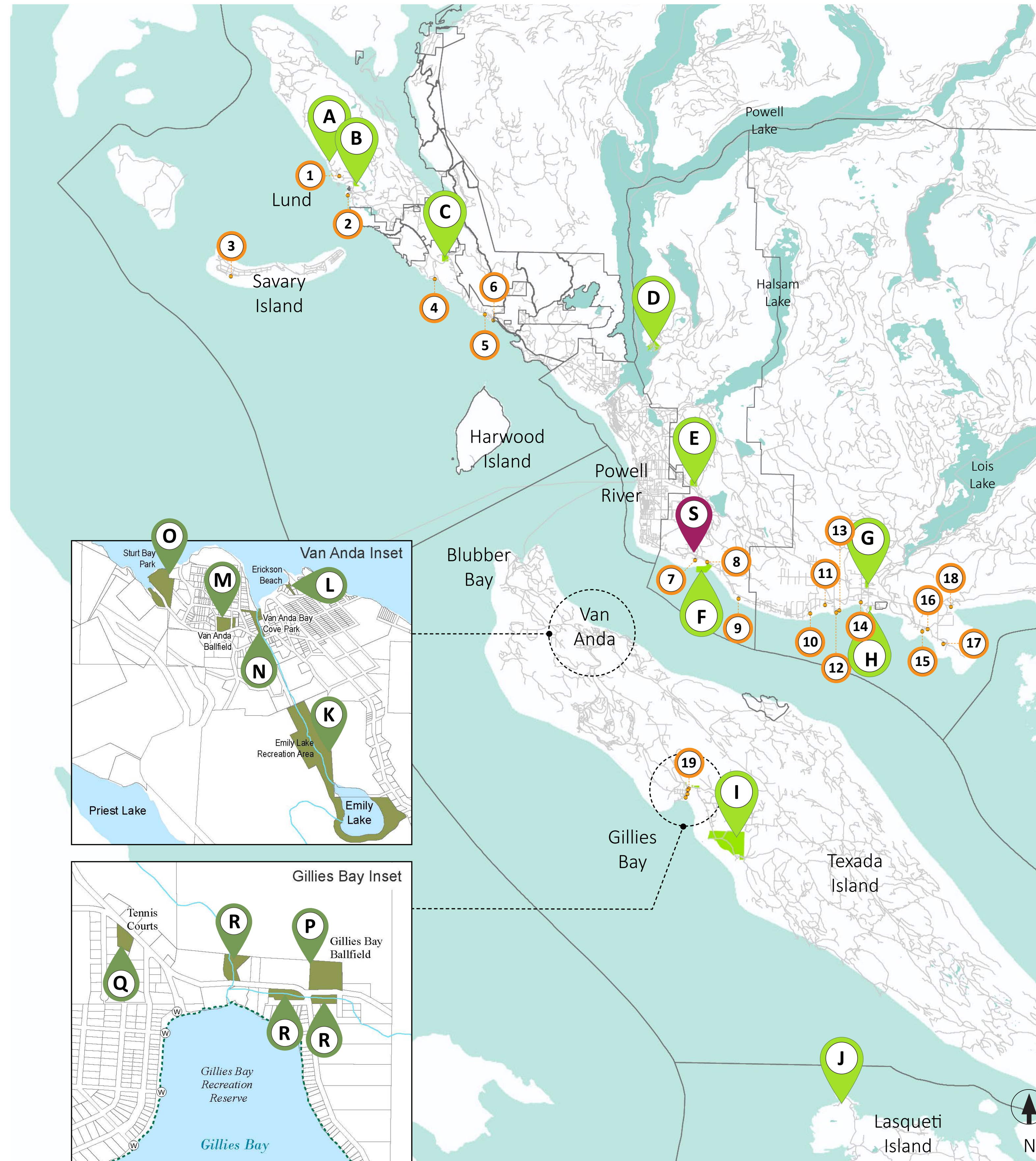
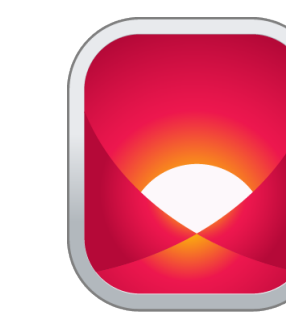
qathet.ca/current_project/parks-trails-strategy/



Myrtle Creek Pedestrian / Cycling Bridge

Parks & Trails Strategy

Inventory of Parks & Trails



qathet Regional District parks service is composed of the following:

REGIONAL PARKS

- A** Diver's Rock Regional Park
- B** Klah Ah Men Lund Gazebo Regional Park
- C** Craig Regional Park
- D** Haywire Bay Regional Park
- E** Paradise Exhibition Park
- F** Myrtle Rocks Regional Park
- G** Rossander Regional Park
- H** Palm Beach Regional Park
- I** Shelter Point Regional Park
- J** Boot Point Regional Park

ACTIVE TRANSPORTATION CORRIDORS

- S** Myrtle Creek Pedestrian/Cycling Bridge

BEACH ACCESS TRAILS

- 1** Finn Bay Road
- 2** Long Acre Road
- 3** Julian Road
- 4** Emmonds Road
- 5** Sturt Beach
- 6** Southview Road
- 7** Pebble Beach Road
- 8** Myrtle Rocks
- 9** Armour Road
- 10** Broom Road
- 11** Patrick Road
- 12** Cove Road (look out)
- 13** Mahood Road
- 14** Phillips Road
- 15** Hollingsworth Road
- 16** Osprey Road
- 17** Canoe Bay
- 18** Thunder Bay Road
- 19** Gillies Bay (3)

COMMUNITY PARKS

Van Anda Community Parks:

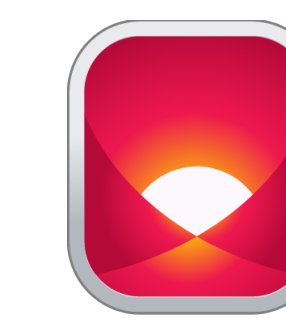
- K** Emily Lake Recreation Area
- L** Erickson Beach
- M** Van Anda Ball Field
- N** Van Anda Bay Cove Park
- O** Sturt Bay Park

Gillies Bay Community Parks:

- P** Gillies Bay Ball Field
- Q** Gillies Bay Tennis Courts
- R** 3 Vacant Parcels (designated Parks and Recreation)

Parks & Trails Strategy

Regional Parks Services



REGIONAL PARKS

The Regional Parks Service is established by bylaw and financed by taxpayers from across the region.

Under the Regional Parks Service, qathet Regional District manages and protects 10 Regional Parks. All of the Regional Parks offer day-use, and 2 have campgrounds. These parks and facilities are located on lands that are owned by the Regional District or leased by the Regional District from the province.



Palm Beach Regional Park

BEACH ACCESS TRAILS

As part of the Regional Parks Service, qathet Regional District has developed and maintains over 20 beach access trails and one active transportation corridor. These trails are all located on lands within provincial Crown right of ways.

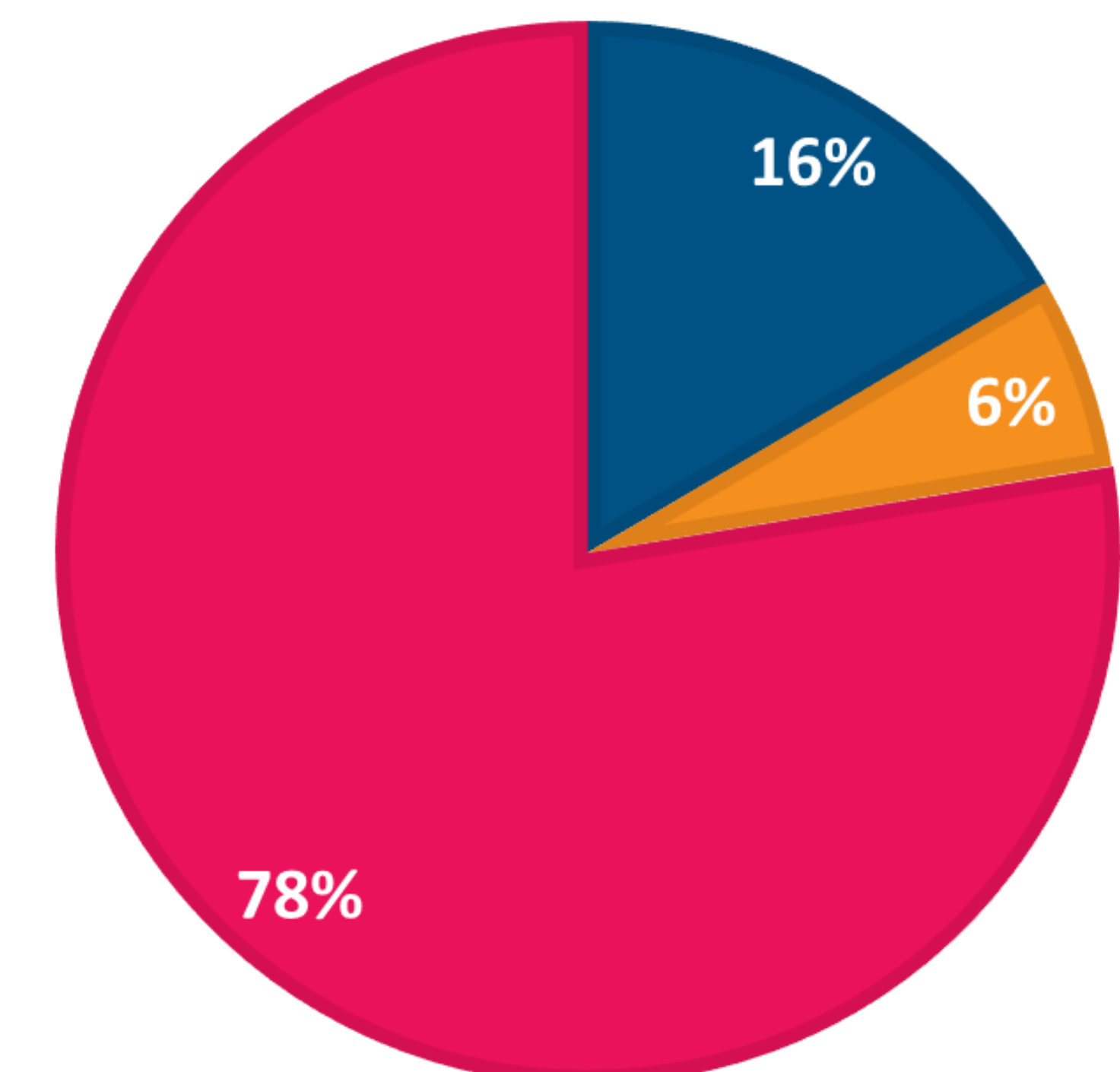
BUDGET

The Regional Parks operating budget for 2022 is **\$1,105,078**.

Of the total budget, **\$857,548** is allocated to maintaining parks and trails, **\$64,530** is reserved for capital costs.

\$183,000 is set aside in a Reserve Fund for future parkland acquisition.

- Reserve Fund for Parkland Acquisition
- Reserve Fund for Capital Costs
- Annual Park Operating and Maintenance Costs



Parks & Trails Strategy

Community Parks Services

COMMUNITY PARKS

Community Parks Services have been established by bylaw for Electoral Areas A, B, C and D (Texada Island).

Community parkland, or payment for park purposes, is acquired by the Regional District through the subdivision process. Payments for park purposes are set aside in a reserve fund for future parkland acquisition.



Gillies Bay, Texada Island

COMMUNITY PARKS ON TEXADA

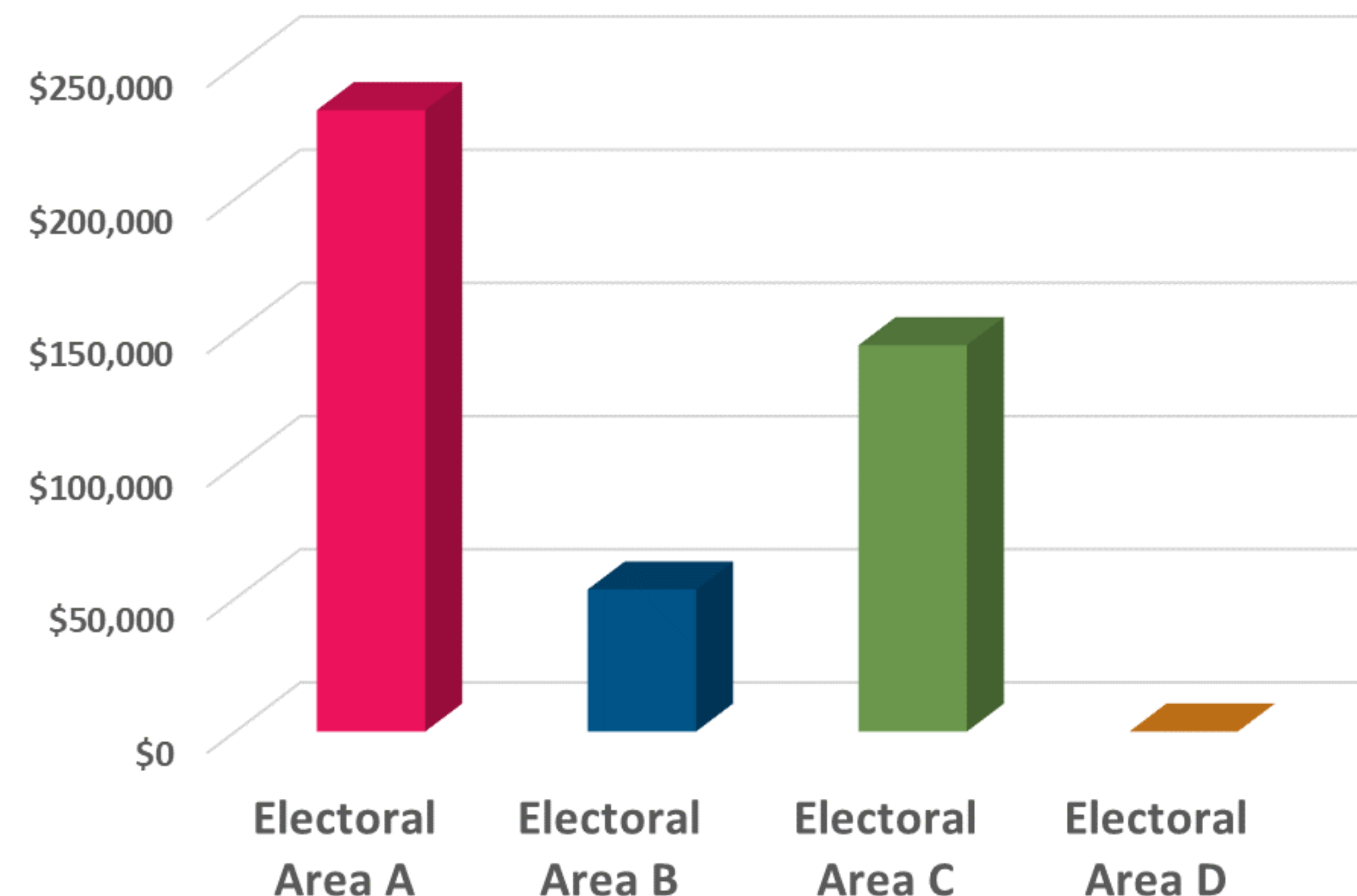
The Regional District owns and leases several Community Parks on Texada Island (in Van Anda and Gillies Bay) that are managed under the advice of Texada Island Recreation Commission (TIRC).

Community Parks on Texada are financed by taxpayers from Texada Island.

COMMUNITY PARKS RESERVE FUNDS

Community Parks reserve funds have been established by bylaw for Electoral Areas A, B, C, and D (Texada Island).

Reserve fund balances for 2022 include **\$233,284** for Electoral Area A, **\$53,323** for Electoral Area B and **\$145,043** for Electoral Area C.



Parks & Trails Strategy

Community Values



What do you **LOVE** and **VALUE** most about qRD parks and trails?

How can existing qRD parks and trails be **IMPROVED**? Is anything **MISSING**?



Parks & Trails Strategy

Community Priorities



Place a dot on the scales below to indicate what you think is most important:

IMPROVE EXISTING PARKS AND TRAILS

Maintain the existing amount of parks and trails, and focus on making improvements.



ESTABLISH NEW PARKS AND TRAILS

Focus on acquiring more qRD parks and trails throughout the District.

PARKLAND FOR CONSERVATION

Parks should focus on conservation and the preservation of natural areas.



PARKLAND FOR RECREATION

Parks should focus on providing the community with opportunities for active outdoor recreation.

SMALL COMMUNITY PARKS

Provide smaller parks, but more of them. (Overall amount of parkland remains the same.)



LARGE DESTINATION PARKS

Provide larger parks, but fewer of them. (Overall amount of parkland remains the same.)

MAINTAIN CURRENT BUDGET FOR PARKS

Stay within the current budget for parks services.

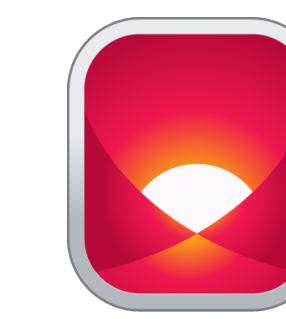


INCREASE FUNDING FOR PARKS

Increase funding for parks by reducing services in other departments and/or increasing taxes.

Parks & Trails Strategy

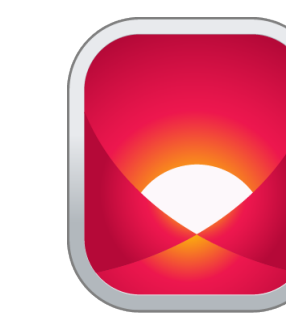
Community Vision



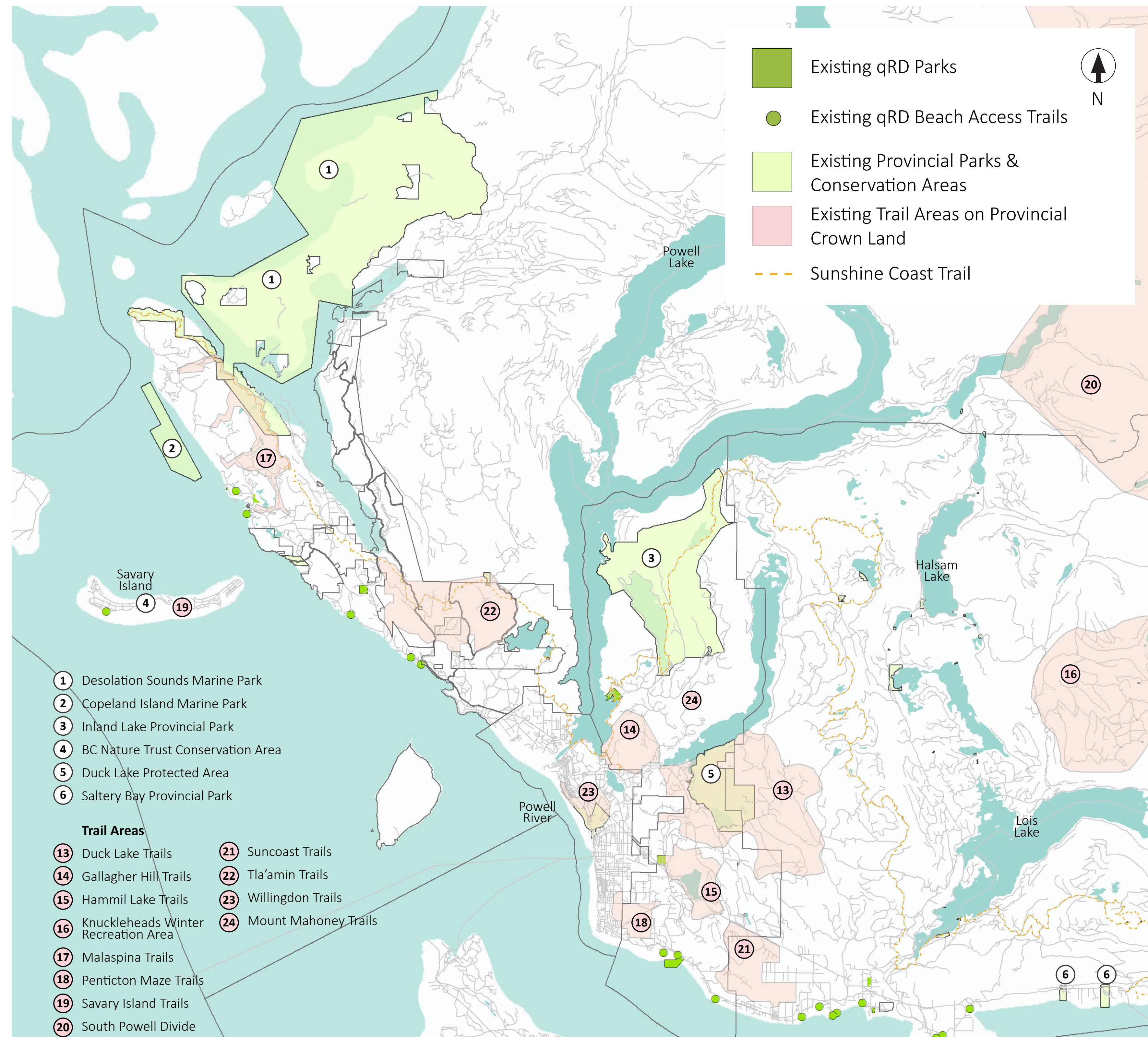
What words best reflects your **VISION** for the future of qRD parks & trails?

A large, empty rounded rectangle with a thin teal border, intended for users to write their responses to the question above.

Parks & Trails Strategy



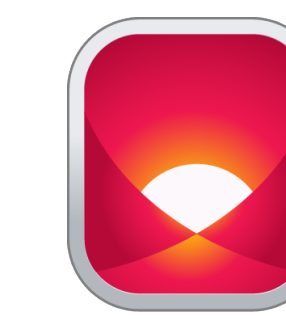
Desired Locations for Future Parks or Trails



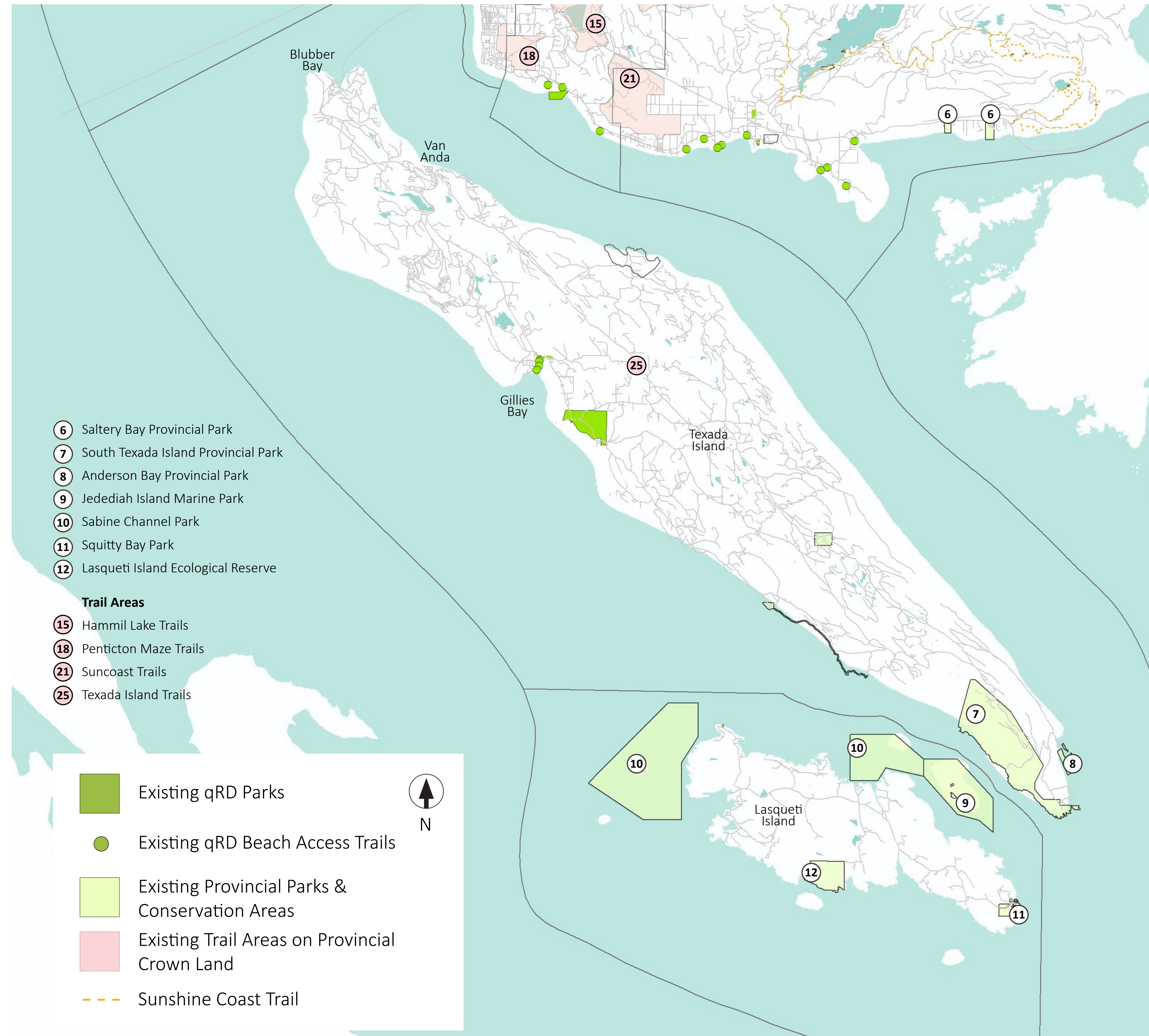
Where would you like to see new qRD parks and trails in the future?

Empty response box for user input.

Parks & Trails Strategy



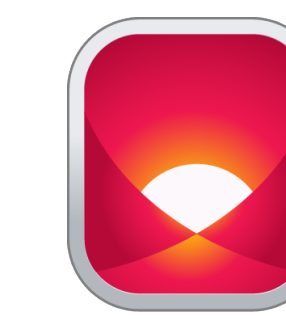
Desired Locations for Future Parks or Trails



Where would you like to see new qRD parks and trails in the future?

Parks & Trails Strategy

Improving Accessibility

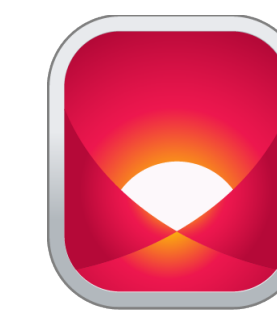


How could **ACCESSIBILITY** at qRD parks and trails be improved (for the elderly or those with mobility challenges, for example)?

A large, empty rounded rectangle with a dark blue border, intended for users to provide their answers to the question above.

Parks & Trails Strategy

Additional Comments



What else do we need to know?

Share your **IDEAS** here...

A large, empty rectangular box with a dark blue border, intended for users to provide additional comments or ideas.