

# qathet Emergency Shelter

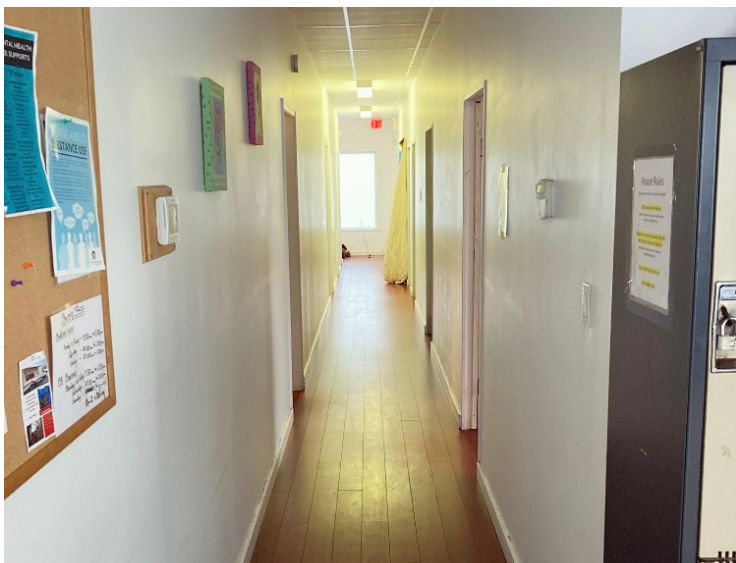


**NOW OPEN 24 HOURS A DAY  
until March 31, 2023**

Location: 4746 Joyce Ave.  
(next to the Community Resource Centre)

## The Emergency Shelter

- Low-barrier shelter services available 24/7
- Open to any qathet resident age 19+ who is unhoused and in need of a safe, warm place to stay
- 20 beds available for men, women, couples and gender-diverse guests
- Resource navigation and connections to community supports
- Pet-friendly
- 3 meals daily



For more information email:  
[housingservices@liftcommunityservices.org](mailto:housingservices@liftcommunityservices.org)