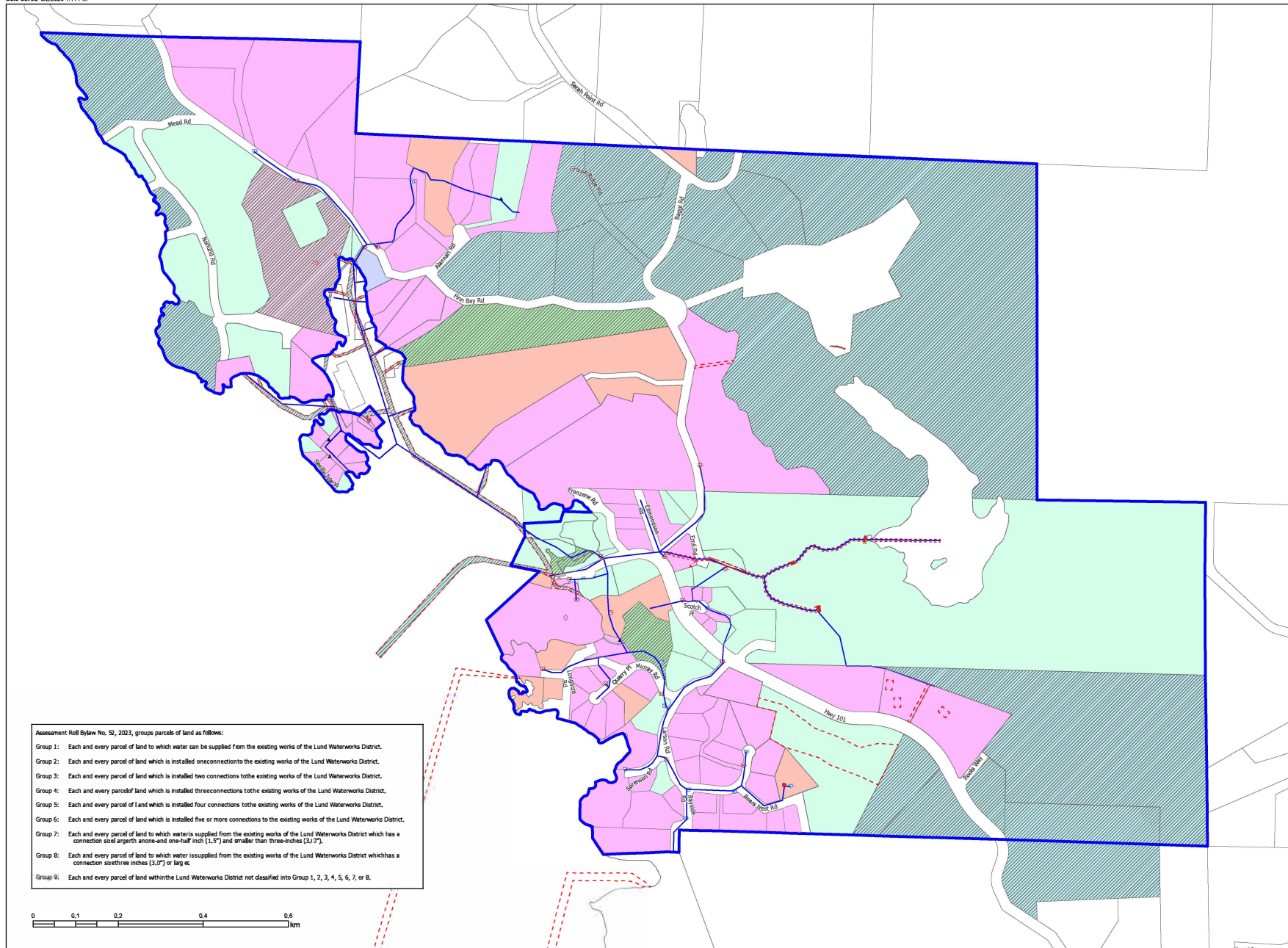


Lund Waterworks
Assessment Roll Bylaw No. 52, 2023 Parcel
Categories & Service Area Boundary
Information Map
Updated May 8, 2024

Note:
 In the event there is a conflict between the groupings shown on this map and the groupings shown on the 2024 Assessment Roll, the 2024 Assessment Roll prevails.



Assessment Roll Bylaw No. 52, 2023, groups parcels of land as follows:
 Group 1: Each and every parcel of land to which water can be supplied from the existing works of the Lund Waterworks District.
 Group 2: Each and every parcel of land which is installed one connection to the existing works of the Lund Waterworks District.
 Group 3: Each and every parcel of land which is installed two connections to the existing works of the Lund Waterworks District.
 Group 4: Each and every parcel of land which is installed three connections to the existing works of the Lund Waterworks District.
 Group 5: Each and every parcel of land which is installed four connections to the existing works of the Lund Waterworks District.
 Group 6: Each and every parcel of land which is installed five or more connections to the existing works of the Lund Waterworks District.
 Group 7: Each and every parcel of land to which water is supplied from the existing works of the Lund Waterworks District which has a connection sized at least one-and-one-half inch (1.5") and smaller than three-inches (3.0").
 Group 8: Each and every parcel of land to which water is supplied from the existing works of the Lund Waterworks District which has a connection sized three inches (3.0") or larger.
 Group 9: Each and every parcel of land within the Lund Waterworks District not classified into Group 1, 2, 3, 4, 5, 6, 7, or 8.



Legend

- Lund Water Service Area
- Surveyed ROWs / Easements / Interest Parcels (not complete)
- Water System Structure Footprint
- Water Facilities and dams
- Approximate Water Mains

Hydrants and Standpipes

Type

- Hydrant
- Standpipe
- ▲ Standpipe Approximate Position

Categorized Parcels

- Group 1
- Group 2
- Group 3
- Group 4
- Group 5
- Group 6
- Group 7
- Group 8
- Group 9